

photo by Dimplekiss Photography



Rogue

Rogue is one of the 12 Great Dane puppies who were fostered by Executive Director, Kiska Icard—pictured with Dane mama, Riley, inside the cover of this issue.

Chillin' WITH Children

Great dogs don't happen by accident—it takes a lot of commitment from their people to help them function as part of the family. One of twelve Great Dane pups who were rescued with their mama, Rogue received a solid foundation of training and socialization while she was at SHS. Her adoptive family continued to build on those skills by taking a puppy class with her. As experienced dog owners (they also have a 2-year-old Great Dane named Thor), and the parents of two small children, their main focus is to make sure their year-old dog is aware of her size and plays at an appropriate energy level. They report that Rogue navigates family dynamics like a pro. She and Thor are best buddies even though she is now surpassing him in backyard sprints. But when it comes to the kids, Rogue stays right by their side. Her family tells us, "If our oldest is out running in the backyard Rogue will follow, if our daughter is sitting she will find a spot right next to her... she completely understands when it is playtime or time to rest." And their younger child "loves sitting next to her or walking around in the crate when she is in there lying down." Rogue clearly has a special bond with her human siblings, so apparently nurtured by this dedicated family. ■

2014
Annual
Report

2014 Annual Report

Shelter Capacity: 200

701
Strays

824
Transfers from
other rescues

946
Owner Surrenders

2,471
Animals Rescued

303
Animals Returned
to their homes

Forget-Me-Not

FARM

400
children served

15
agencies served

60

Fospice Care
Animals

895

Foster Care
Animals

Live Release Rate

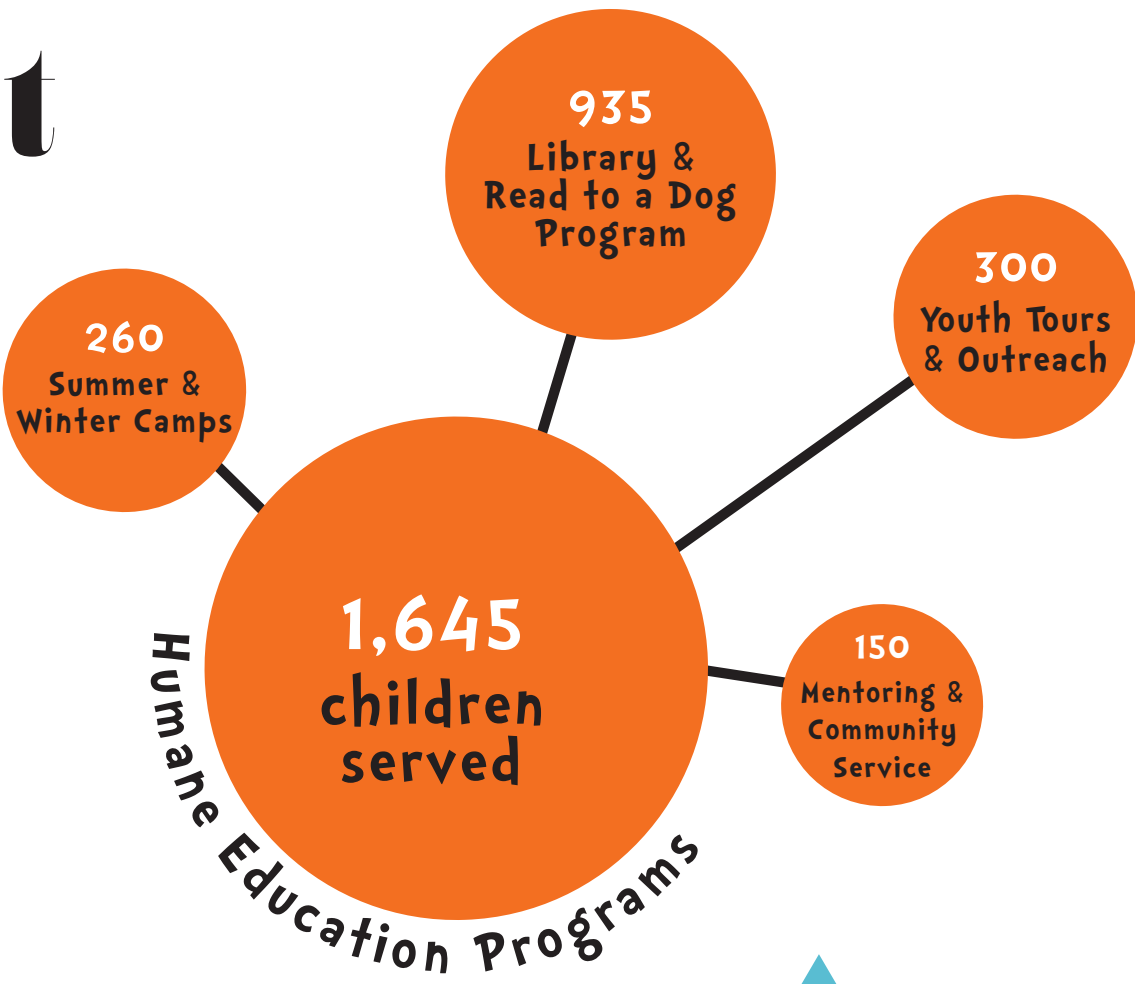
97%

1,977
Shelter Medical
Cases Treated

2,394
Animals served at
Public Hospital

\$26,424
Charity Medical
Services Rendered

pet

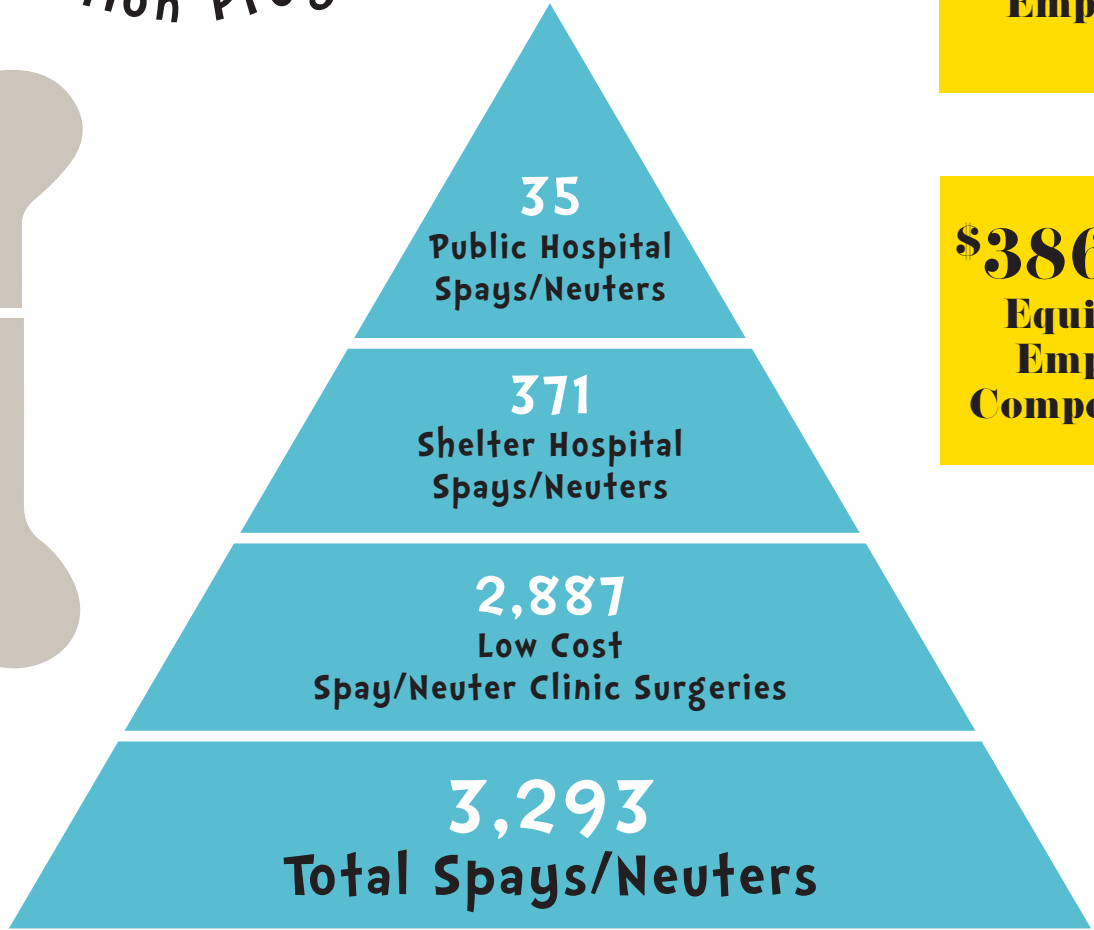


568
Volunteers

39,438
Volunteer Hours

18.96
Equivalent FT Employees

\$386,886
Equivalent Employee Compensation



2014 Annual Report Continued

2014 Board of Directors

Kiska Icard, Executive Director
 Evelyn Mitchell, President
 Kathy Yerger, Secretary
 Shannon Vandewalle, Treasurer
 Kati Aho
 Darlene Brazil
 Brent Cassell
 Fredd Culbertson
 Chris Kittredge
 Marty Olhiser
 Paul Pendergast
 Mark Penn
 John Prouty
 Robert Quail

2014 Advisors

Karen Alary
 Andrea Bandy
 Scott Bartley
 Ronni Berg
 Thomas Duryea
 Rob Icard
 Robin Schaffner
 Betty Ann Sutton

Income

Donations, Events, Grants	\$2,828,837	48%
Bequests/Endowments	\$1,194,782	20%
Hospital, Adoption, Training & Service Fees	\$1,639,917	28%
Pet Supply Shop Sales	\$100,736	2%
City Contracts	\$6,925	1%
Investments and Rental Income/Loss	\$41,406	1%
TOTAL	\$5,812,603	100%

Expenses

Adoptions and Animal Care	\$2,967,649	74%
Education, Outreach and Abuse Prevention	\$331,145	8%
Management and General	\$351,491	9%
Donor Development and Fundraising	\$371,520	9%
TOTAL	\$4,021,804	100%

Supporting second chances.

As a locally founded, donor-supported safe haven for animals, Sonoma Humane Society does not receive federal or state funding or financial aid from any other humane society or shelter. Your contributions enable us to provide compassionate care and protection for animals when they need it most.

82¢ of every dollar donated goes directly to help homeless animals get the medical attention, behavior support and adoption services they need to go to live full, happy lives with loving families.

Join us today—your support makes second chances possible! Contact Melissa Dobar, Director of Development, at (707) 577-1911 ext. 241 or MDobar@sonomahumane.org

Donate online by visiting sonomahumane.org and clicking on DONATE.



sonoma
HUMANE
SOCIETY

5345 Hwy 12 W, Santa Rosa, CA 95407
 Tel: 707.542.0882 Fax: 707.542.1317
sonomahumane.org
 Tax ID# 94-6001315